

# Ergo-Roll

Roller conveyor for wheels



## SPECIFICATIONS

- For passenger car and light vehicle wheels
- Can be connected in series, without limit
- Rollers mounted on ball bearings
- Rollers made of recyclable composite material
- Adjustable height
- Tilttable
- Standard colour: red RAL 3020

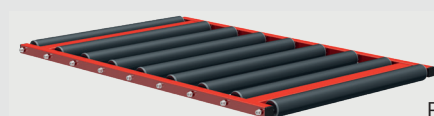
## TECHNICAL INFORMATION

CAPACITY	2 wheels
MAX. LOAD WEIGHT/ROLL	50 kg
MAX. LOAD WEIGHT	450 kg
NUMBER OF ROLLS	9
LENGTH	120 cm
WIDTH	75 cm
HEIGHT	65/75 cm
WEIGHT	29 kg

The Ergo-Roll is made up of two elements:

- The roll-table (ERR)
- The table leg (ERP) or the foldable table leg (ERPP)

To put a table chain together you need two legs for the first table and one leg for each additional table.



ERR



ERP



ERPP

Neerveld 9 - 2550 Kontich - België

+32 3 201 51 10   info@dqn.be   www.dqn.be





Free!  
Choose your  
RAL colour



The Ergo-Roll is one of the DQN products in the "Ergo-Line" range. As its name suggests, this range is intended to make your workspace comfortable and efficient.

The legs, individually adjustable in height, make it possible to level the table regardless of the ground's unevenness. They also allow the roll-table to be tilted so that the wheels can be moved effortlessly from one side to the other. The height range of 65 cm to 75 cm allows the wheels to travel a considerable distance without drive.

Its modular design makes it possible to assemble them endlessly in series and to move from an incline to a horizontal position and vice versa without any additional connecting module.

The rollers, made of high-quality synthetic material, allow the most delicate rims to roll without damage, even on the decorative side of the rim. These rollers are mounted on all-steel ball bearings which are dustproof. They will continue to spin for a long time. In addition, the recyclable polymer from which the roll is made already comes from recycling.

If your workplace does not allow you to work in one straight line, you can also use the corner table. This ensures that wheels can easily make a 90° turn.

## OPTIONS

- RAL colour on demand
- FC: End of slide brake
- FL: End of slide brake that lengthens the table with two rolls (+27 cm). Can also serve as extension without braking (FX).
- RL: Side roll to easily pull the wheel to the side.
- DR: Wheel detector. Detects if there is still a wheel on the table (ER) so that the Ergo-Lift is only activated when there is space on the Ergo-Roll.