

DQN
DU QUESNE



DQN - DU QUESNE
Catalogue

EN



Opti-fit

High-quality tyre-changers for run-flat, low profile and all other passenger car tyres



SPECIFICATIONS

- The unique tilting column
- The electromechanical mounting plate
- The profiled tools
- The RF arm for runflat and low-profile tyres
- The trident
- The linear bead breaker

THE SMART COLUMN

With a unique concept, the Opti-fit's tilting column uses opposite forces to push the mounting head away from the rim. Since no contact is possible, it provides the assurance of a job well done.



TECHNICAL INFORMATION

MODEL	Opti-fit
RIM Ø	10" - 23" (26" with SG3 claws)
MAX. WHEEL Ø	96 cm
MAX. TYRE WIDTH	32,5 cm (36 cm at the bead breaker)
MAX. RIM WIDTH	2" - 12" (13" at the bead breaker)
AIR PRESSURE	8 - 15 bar
POWER SUPPLY	230/400V 50Hz 3Ph
MOTOR POWER	0,95 kW
WORK AREA	180 cm x 150 cm
MIN. DIMENSIONS (cm)	L 104 x W 77 x H 148
MAX. DIMENSIONS (cm)	L 133 x W 105 x H 190
WEIGHT	237 kg

Pro-fit

High-quality tyre-changers for run-flat, low profile and all other passenger car tyres

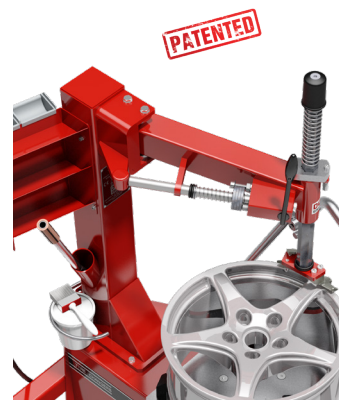


SPECIFICATIONS

- The extra-rigid swivel arm
- The electromechanical mounting plate
- The profiled tools
- The RF arm for runflat and low-profile tyres
- The trident
- The linear bead breaker

THE INFLEXIBLE SWIVEL ARM

The Pro-fit is equipped with a swivel arm of unequalled rigidity that always keeps the mounting head away from the rim.



TECHNICAL INFORMATION

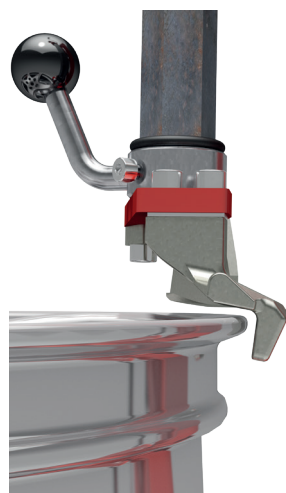
MODEL	Pro-fit
RIM Ø	10" - 23" (26" with SG3 claws)
MAX. WHEEL Ø	96 cm
MAX. TYRE WIDTH	31,5 cm (36 cm at the bead breaker)
MAX. RIM WIDTH	2" - 11" (13" at the bead breaker)
AIR PRESSURE	8 - 15 bar
POWER SUPPLY	230/400V 50Hz 3Ph
MOTOR POWER	0,95 kW
WORK AREA	150 cm x 150 cm
MIN. DIMENSIONS (cm)	L 92 x W 97 x H 145
MAX. DIMENSIONS (cm)	L 120 x W 103 x H 177
WEIGHT	217 kg

UNEQUALLED CLAMPING



The electromechanical clamping plate (DQN patent) equipped with «Smooth Grip» claws ensure you an incomparable quality of external clamping, perfect automatic centring and horizontal positioning.

PROFILED MOUNTING HEAD

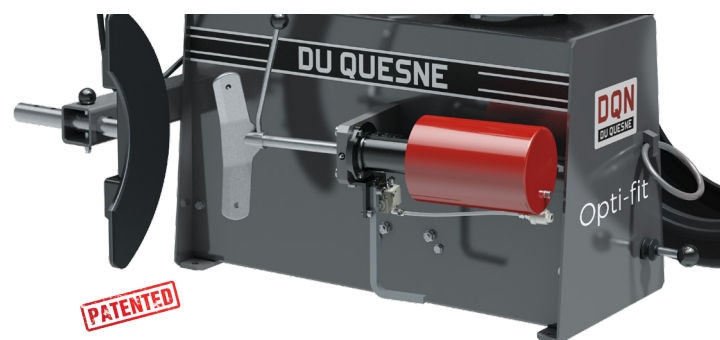


The column adjustment, with positioning of the mounting head and the automatic distance taking of the rim, is done in a single movement. In addition, this adjustment is preserved from one wheel to the other.

The design of the mounting head minimizes tensions on the tyre to its lowest level and allows the mounting of tyres on rims with prominent sail.

SAFE AND POWERFUL BEAD BREAKING

The powerful linear bead breaker (DQN feature): The new bead breaker shovel with pre-positioning is designed to maintain the desired position on the tyre. The linear motion helps to better visualize the trajectory and avoid contact between the rim and the shovel.



IDEAL FOR LOW-PROFILE AND RUN-FLAT TYRES

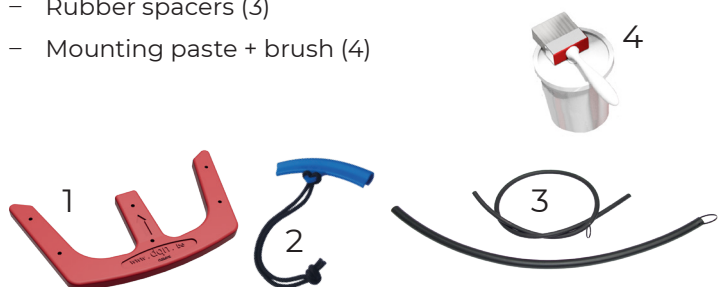
Runflat arm (DQN patent): It is a multi-purpose arm that pushes the bead well into the rim and allows the dismantling spacer to be placed. It helps lift the tyre in order to find the second bead during the dismantling process. It is very efficient when used together with the trident for the mounting of all types of low-profile and run-flat tyres.

Trident (DQN patent): Used together with the RF arm, this accessory can be placed in a second and helps with the mounting of the most difficult tyres.



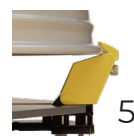
STANDARD EQUIPMENT

- RF-arm for mounting and dismantling of run-flat tyres and low-profile tyres
- Tyre-inflator with calibrated air gauge
- Dismounting lever
- Trident (1)
- Rim edge protector (2)
- Rubber spacers (3)
- Mounting paste + brush (4)



OPTIONS AND ACCESSORIES

- Single-phase motor or motor with other voltages
- RAL colour on demand
- Customized adaptations
- +3" claws for rims up to 26" (5)
- Claw covers (6)
- Manu-fit A for small wheels of quad, kart, wheelbarrow, etc. as from 4" to 21"



MFC

Manu-fit C is fitted with a leg equipped with a three-step manual bead breaker to provide a wide reach. This leg includes holders for three supporting axles and the mounting/dismounting lever.



SPECIFICATIONS

- The mechanical fixing plate (4" to 12") for wheels of cars, motorcycles, quads, karts, wheelbarrows etc.
- The 3 centre axles, adapted to all centre bores.
- The mounting/dismounting lever. The mounting part is equipped with a profiled knob to roll the bead over the edge of the rim.

MFA

Manu-fit A is an accessory for our Opti-fit and Pro-fit tyre-changers, extending their functions to deal with smaller rims. It is placed directly on their mounting plate.



STANDARD EQUIPMENT

- 1 mounting/dismounting lever
- 3 supporting axles for the centre bore as from 12"



OPTIONS AND ACCESSORIES

- RAL colour on demand
- RB accessory for rims without centre bore



TECHNICAL INFORMATION

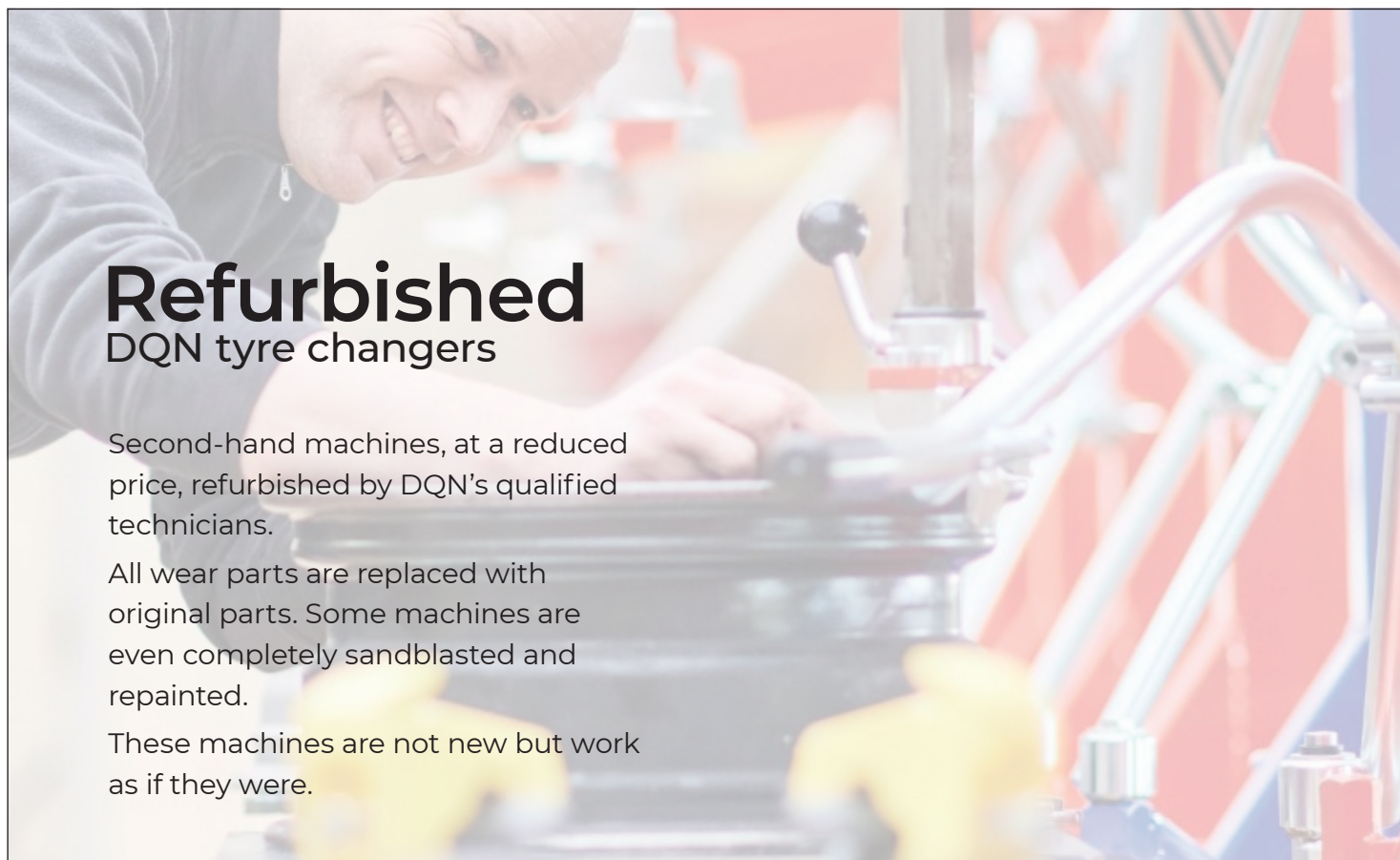
MODEL	Manu-fit A	Manu-fit C
RIM Ø	4" - 21"	4" - 21"
DIMENSIONS (cm)	L 65 x W 65 x H 16	L 65 x W 65 x H 75
BEAD BREAKER	-	9"
WEIGHT	18 kg	30 kg

Refurbished DQN tyre changers

Second-hand machines, at a reduced price, refurbished by DQN's qualified technicians.

All wear parts are replaced with original parts. Some machines are even completely sandblasted and repainted.

These machines are not new but work as if they were.

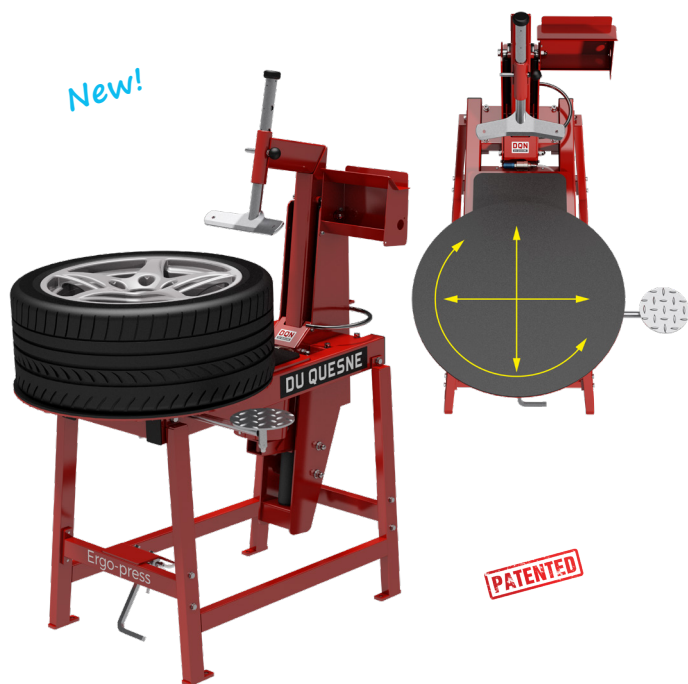


Ergo-Line



Ergo-Press Pneumatic bead breaker table

New!



The linear movement of its ram gives perfect control over the process. The new mobile table with lateral, axial, and rotational movement allows an easy wheel positioning. This table is self-locking when breaking a tyre bead. Its DQN hydraulic shock absorber guarantees a smooth bead breaking.

ACCESSORIES

- Second lateral turning plate



TECHNICAL INFORMATION

MAX. TYRE WIDTH	36 cm
RIM WIDTH	2" - 13"
AIR PRESSURE	8 - 15 bar
DIMENSIONS	L 93/113 x W 83 X H 148 cm
WEIGHT	96 kg

Ergo-Lift Pneumatic wheel lift



This self-activating elevator starts to operate as soon as a wheel is placed on it and goes down as soon as it is unloaded.

In «Ergo-roll table load» mode, the lift's movement rises to its maximum height without braking and gives a horizontal speed to the wheel.

In «Machine load» mode, the movement stops at loading height and remains in the up position until the wheel has been unloaded.

TECHNICAL INFORMATION

MAX. TYRE WIDTH	36 cm
MAX. RIM WIDTH	13"
MAX. WHEEL WEIGHT	60 kg
LIFT HEIGHT	76 cm
AIR PRESSURE	7 bar
DIMENSIONS	L 79/60 x W 61 x H 39/96 cm
WEIGHT	26 kg

Ergo-Roll

Roller conveyor for wheels



ACCESSORIES

- FC: End of slide brake
- FL: End of slide brake that lengthens the table with 2 rolls (+27 cm). Can also serve as extension without braking (XT).
- RL: Side roll to easily pull the wheel to the side.
- DR: Wheel detector. Detects if there is still a wheel on the table (ER) so that the Ergo-Lift is only activated when there is space on the Ergo-Roll.



FC



FL



XT



RL



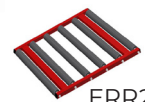
DR

Its modular design made up of two features makes it possible to mount several tables in a line without any limit.

- The **roll-table** (ERR) and **half roll-table** (ERR2): Its rollers made of high-quality material are mounted on all-steel ball bearings.
- The **table leg** (ERP): adjustable in height. Or the **foldable table leg** (ERPP): foldable for easy storage.



ERR



ERR2



ERP



ERPP

To put a table chain together you need two legs for the first table and one leg for each additional table.

TECHNICAL INFORMATION

CAPACITY	2 wheels
MAX. LOAD / ROLLER	50 kg
MAX. LOAD	450 kg
NUMBER OF ROLLERS	9
DIMENSIONS	L 120 x W 75 x H 65/75 cm
WEIGHT	29 kg

The **corner table** (ERRA) is the ideal solution when your workplace does not allow you to work in one straight line. This ensures that wheels can easily make a 90° turn.



Ergo-Cage

Tyre inflation cage



Inflating a tyre can be very dangerous. The Ergo-Cage provides good protection for your staff when inflating tyres.

The Ergo-Box is also sold separately.



TECHNICAL INFORMATION

CAPACITY	1 wheel
NUMBER OF ROLLERS	9
DIMENSIONS	L 120 x W 90 x H 120/130 cm
WEIGHT	45 kg
PASSAGE WIDTH	84 cm
PASSAGE HEIGHT	46 cm

Ergo-Line

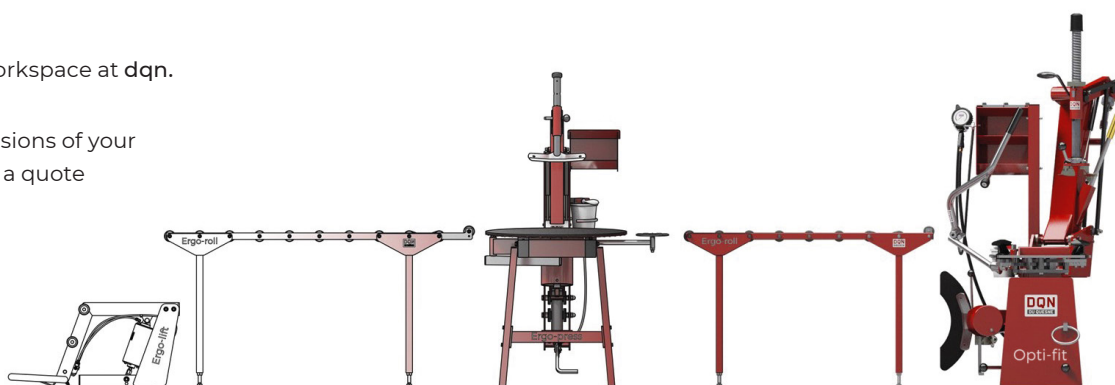
Our ergonomic tyre assembly lines are modular



Simulator

Create your own workspace at dqn.be/simulator.

Find out the dimensions of your set-up and request a quote immediately.

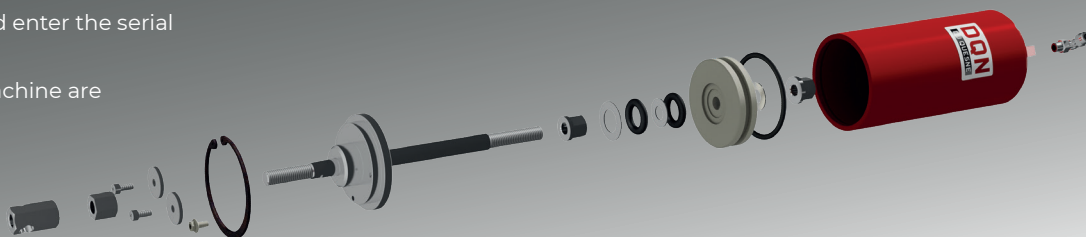


Technical support

also available on our website.

Go to dqn.be/support and enter the serial number of your machine.

All documents of your machine are available.



This practical service* provides a complete yearly maintenance for 3 years.

We will contact you to schedule a maintenance.

*Only available in Belgium and Luxembourg





📍 Neerveld 9 - 2550 Kontich - België

☎ +32 3 201 51 10 ✉ info@dqn.be 🌐 www.dqn.be